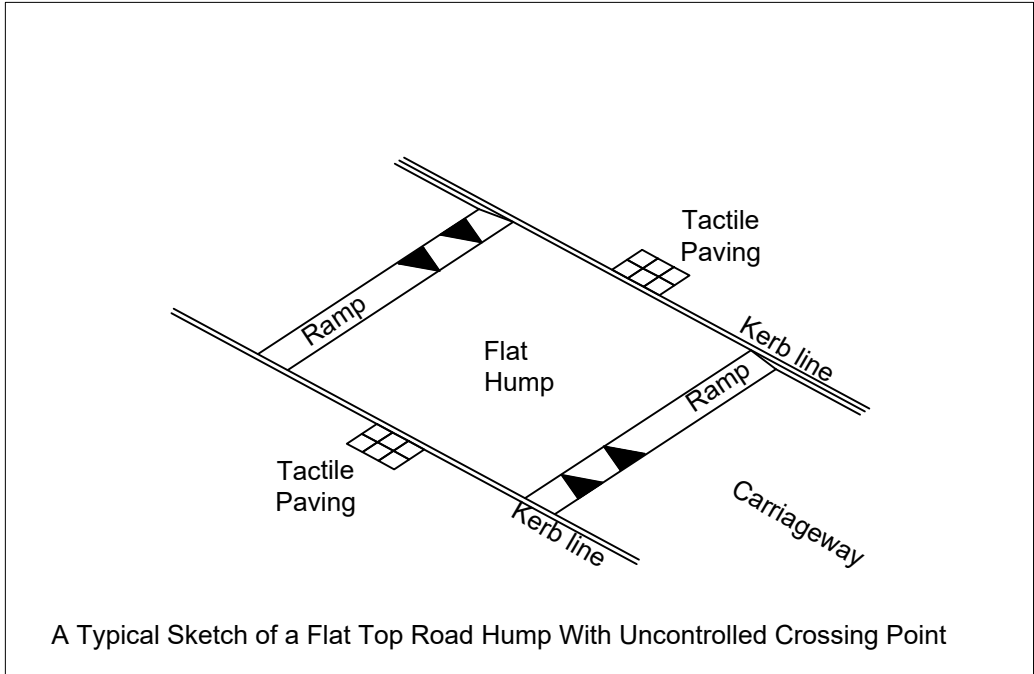
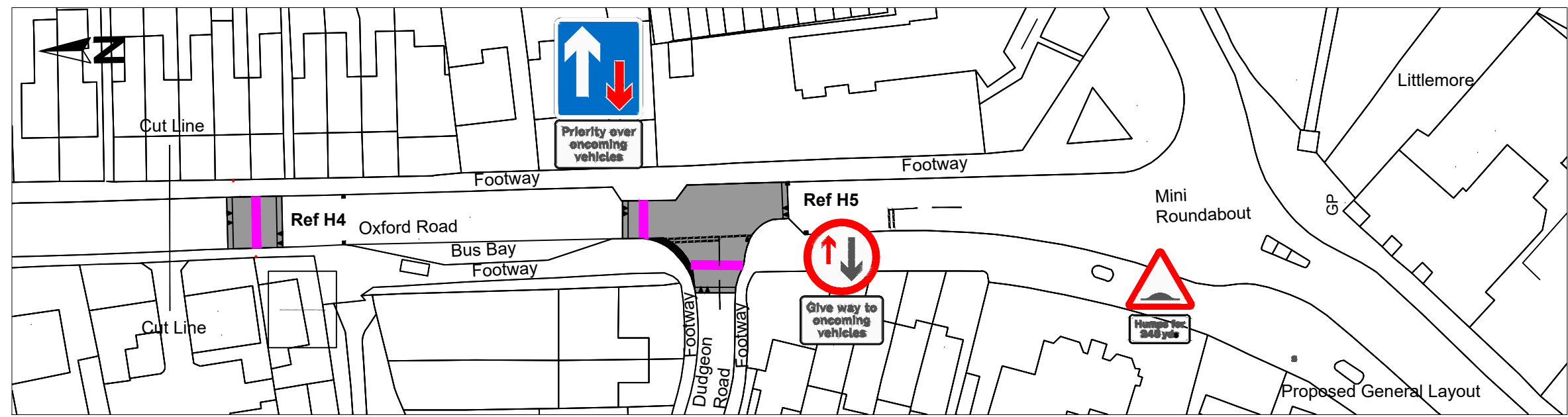
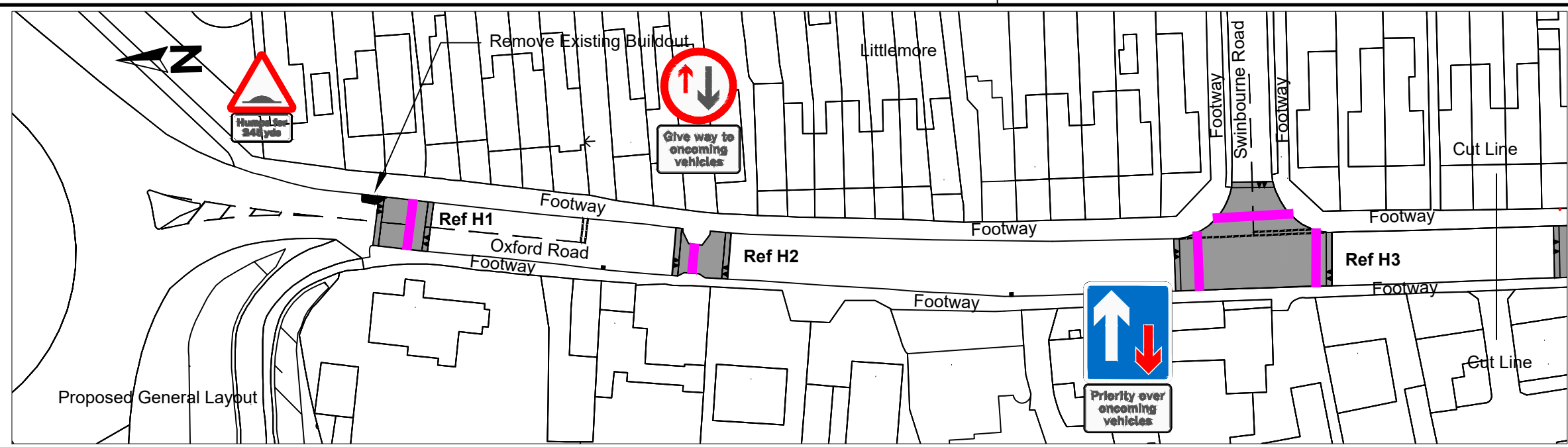


C:\Users\raiph.green\OneDrive - Oxfordshire County Council\Schemes\118 Littlemore - Oxford Road\Formal Consultation Oct20.dwg



Drawing No. Revision

Key

Proposed features are:

- Flat top road hump
- Uncontrolled crossing point

Feature limits and location of signs are indicative subject to change when agreed to proceed with that particular item

SAFETY, HEALTH AND ENVIRONMENTAL INFORMATION

IN ADDITION TO THE HAZARDS/RISKS NORMALLY ASSOCIATED WITH THE TYPES OF WORK DETAILED ON THIS DRAWING, NOTE THE FOLLOWING SIGNIFICANT RESIDUAL RISKS

CONSTRUCTION
MAINTENANCE/CLEANING
DECOMMISSIONING/DEMOLITION

© Crown Copyright and Database rights 10023343 2017

Rev.	Date	Purpose of revision	Drawn	Checked	Approved

Owen Jenkins
Director for Infrastructure Delivery
Communities
Oxfordshire County Council
County Hall
New Road
Oxford
OX1 1ND
Tel: 0845 310 1111

Project title
**Littlemore
Oxford Road**

Drawing title
**Proposed
Traffic Calming
Measures**

Drawing Status: Consultation

Scale @ A3	Drawn by RGr	Checked by	Approved by
	Date drawn	Date checked	Date approved

Oxfordshire Project No. & File Ref

Drawing No. Revision