

Vision in context

The introduction highlighted that the local and regional context has changed significantly since the publication of LTP4. This section provides more detail about those strategies to outline the local context and how they have informed the development of the LTCP.

Oxfordshire Strategic Vision

The Oxfordshire Growth Board is developing a strategic vision for Oxfordshire¹. The Strategic Vision will help establish a common and shared ambition to guide the focus of plans, strategies and programmes for Oxfordshire. The LTCP will play an important role in helping to deliver the emerging Strategic Vision and we have considered this carefully in developing the draft LTCP vision.

Oxfordshire Plan 2050

In support of future growth, the district councils in Oxfordshire are working together to produce a Joint Statutory Spatial Plan known as the Oxfordshire Plan². The plan will be supported by the Oxfordshire Infrastructure Strategy which will identify the supporting infrastructure required. The LTCP is being developed alongside the Oxfordshire Plan and will help inform its further development.

Climate Action Framework

In October 2020, Oxfordshire County Council approved a Climate Action Framework³. The document sets out the county council's plans to make itself a carbon neutral organisation by 2030, and to enable Oxfordshire as a whole to become zero-carbon by 2050. The LTCP will play an important part in helping deliver these commitments and will outline in more detail how transport will contribute to these ambitions.

Local Industrial Strategy

The Local Industrial Strategy sets out an ambitious plan to build on Oxfordshire's strong foundations and world-leading assets, to deliver transformative growth which is clean and sustainable⁴. The LTCP will help to deliver these aspirations and will ensure there is the transport network required to support growth aspirations.

¹ democratic.whitehorsedc.gov.uk/mgChooseDocPack.aspx?ID=2820

² oxfordshireplan.org

³ oxfordshire.gov.uk/sites/default/files/file/about-council/OCC_Climate_Action_Framework-August2020.pdf

⁴ oxfordshirelep.com/sites/default/files/uploads/Oxfordshire-SINGLE-PAGE_1.pdf

Vision in context

Joint Health and Wellbeing Strategy

The Joint Health and Wellbeing Strategy sets out how the NHS, local government and Healthwatch will work together to improve resident's health and wellbeing⁵. The LTCP can help to deliver some of these improvements and specifically takes forward priorities around Healthy Place Shaping.

England's Economic Heartland/ sub-national transport matters

Oxfordshire County Council is a part of England's Economic Heartland (EEH) sub-national transport body. EEH covers 11 local authorities, including all of the Oxford to Cambridge arc. EEH has recently published a draft transport strategy for the region which the LTCP will be set in the context of and aim to support⁶.

For example, it will be important to work collaboratively to address cross authority connectivity challenges, including with Swindon to the west and Buckinghamshire to the east. In addition, Oxfordshire borders the sub-national transport body area covered by Transport for the South East, and there are matters such as cross boundary transport movements from Reading that need careful consideration in the LTCP.

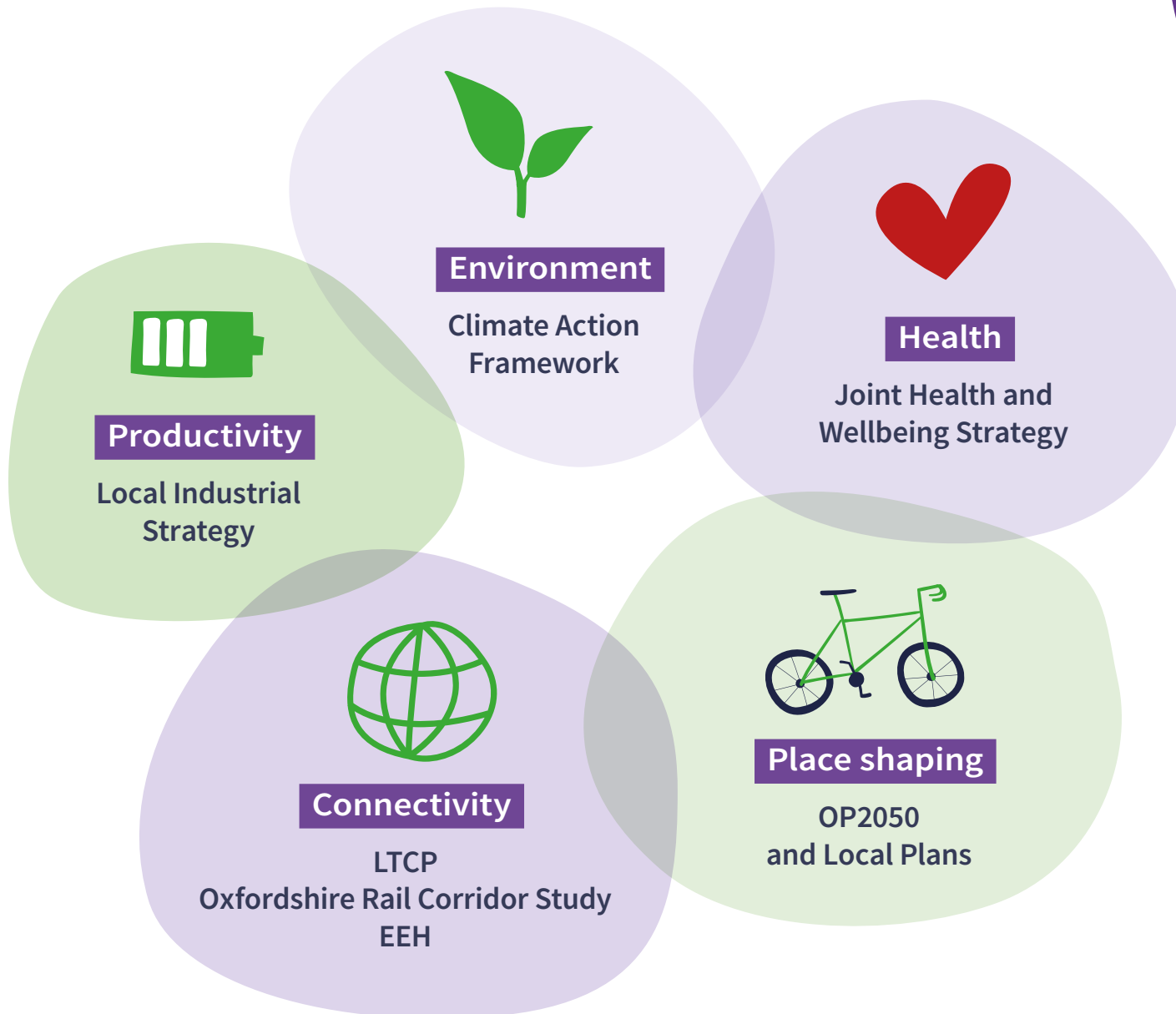


⁵ oxfordshire.gov.uk/sites/default/files/file/constitution/oxfordshirejointhwbstrategy.pdf

⁶ englandseconomicheartland.com/Documents/Draft%20Transport%20Strategy.pdf

Vision in context

LTCP context and strategy linkages.



Question:

Have we identified the key related strategy and policy developments in Oxfordshire? (YES/NO)
If not, what have we not included?