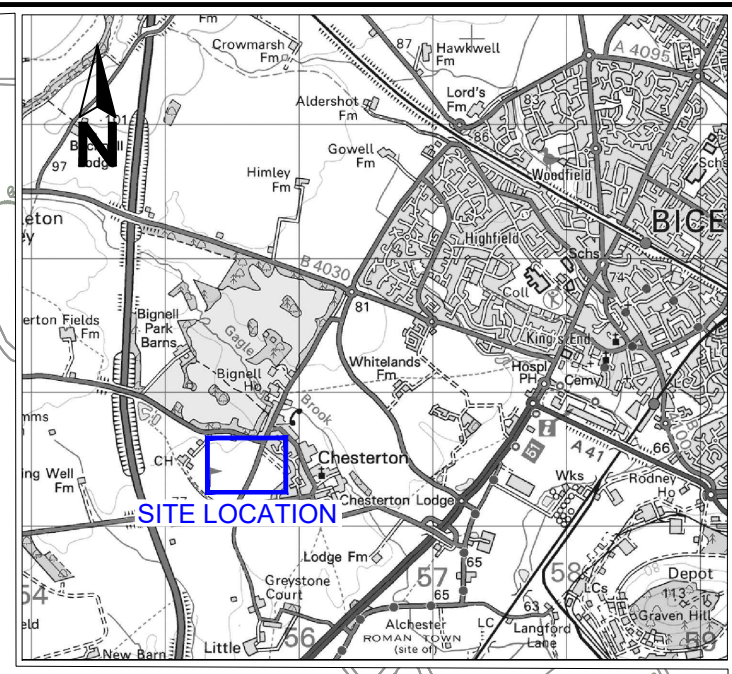
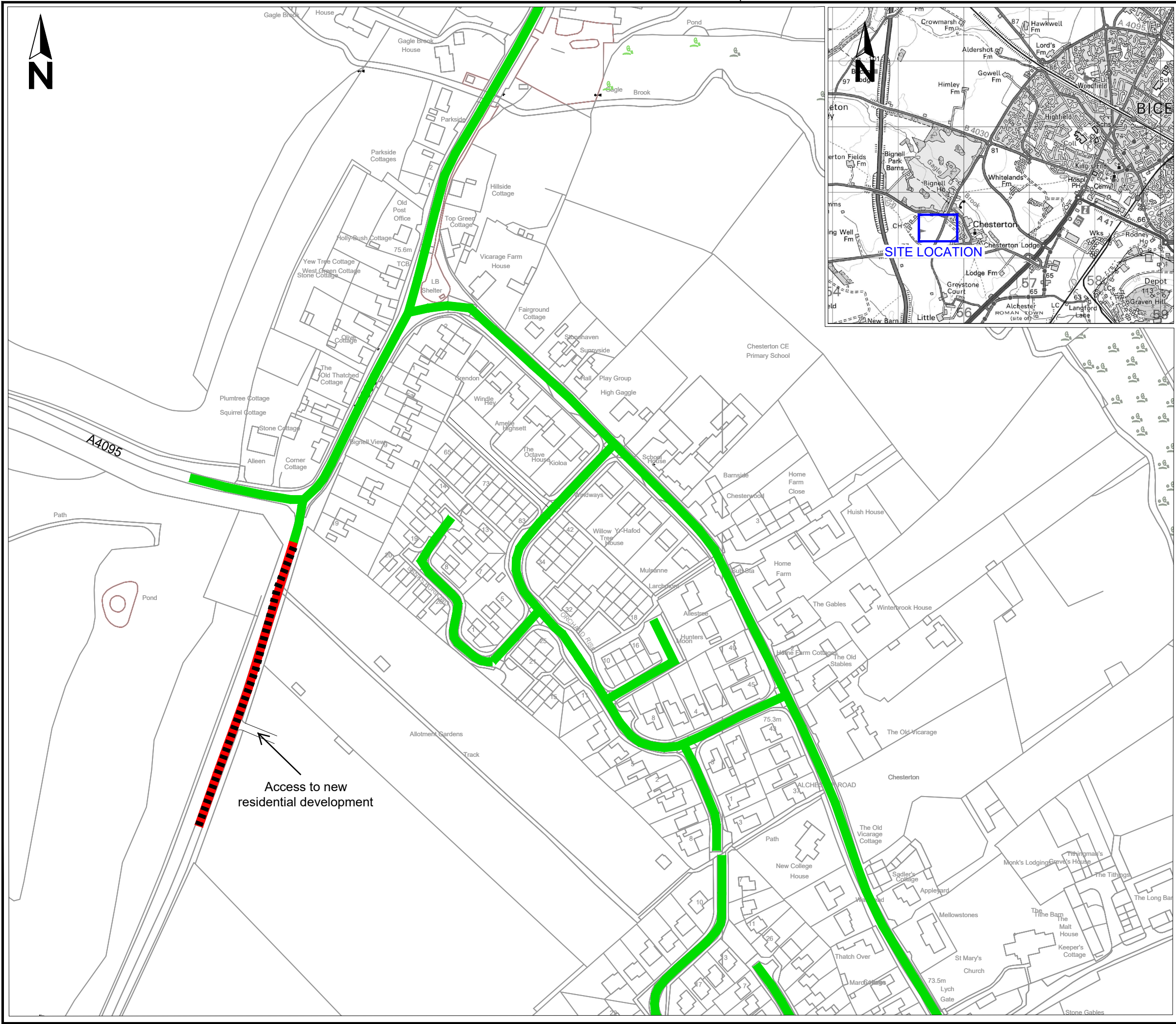


C:\Users\jane.clark\OneDrive - Oxfordshire County Council\TRO useful info\CAD plans\Chesterton 30mph.dwg



Drawing No. Revision 0

**Key**

	Proposed 30mph Speed Limit approximately 180 metres
	Existing 30mph Speed Limit (to remain)

Reproduced from the Ordnance Survey mapping with the permission of the Controller of Her Majesty's Stationery Office © Crown Copyright. Unauthorised reproduction infringes Crown Copyright, and may lead to prosecution or civil proceedings. Oxfordshire County Council Licence No LA076805

Rev.	Date	Purpose of revision	Drawn	Checked	Approved

**OXFORDSHIRE COUNTY COUNCIL**

Owen Jenkins  
Director for Infrastructure Delivery  
Communities  
Oxfordshire County Council  
County Hall  
Oxford  
OX1 1ND  
Tel: 0345 310 11 11  
Fax: (01865) 241577

Project title  
**PROPOSED 30MPH SPEED LIMIT**

Drawing title  
**CHESTERTON**

Drawing Status

Scale @ A3	Drawn by JaC	Checked by	Approved by
N.T.S.	Date drawn 12/18	Date checked	Date approved

Oxfordshire Project No. & File Ref

Drawing No. Revision 0

Access to new residential development